

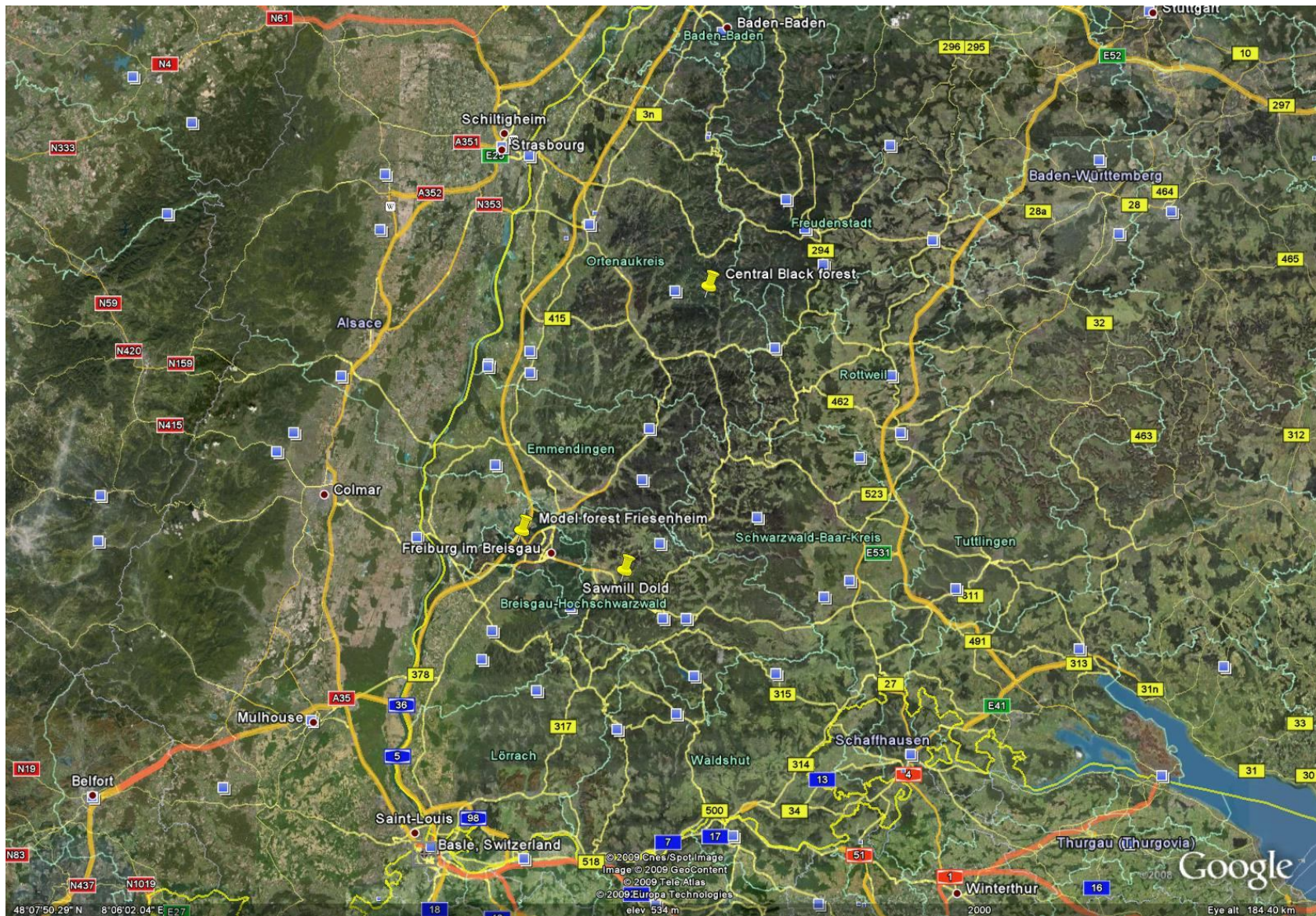
Study tour program to Freiburg, Germany.

Accommodation at the youth hostel Freiburg from Sunday, 09/04/26, until Wednesday, 09/04/30. Price is 20 Euro/night.

<p>Which experts and representatives in different organisations in areas relevant to forest policy will we meet:</p> <p>researchers, yes</p> <p>politicians dealing with forest policy.....no</p> <p>forest board officials (on regional and district level).....yes</p> <p>forest managers at state forest company/-ies.....yes</p> <p>forest managers at private forest companies.....no</p> <p>forest owners or rather their representatives.....yes</p> <p>forest industry managers yes</p> <p>hunters.....</p> <p>.....</p> <p>NGOs in connection to forests and forestry.....no</p> <p>See some of the forest and the forest management practice.....yes</p>		
April 27		
Aims: (1) Introduction to German forestry, with focus on forest policy. (2) Forest		

policy from the point of view of a state forest company.		
<ul style="list-style-type: none"> - meeting at the university with forest board officials/forest owner association - lecture introduction to German forestry - visit of a model forest that demonstrates management approaches to different forest functions (including the question “How to weight functions?”) - meeting with nature conservationists 		<p>Task for the students to be prepared:</p> <p>Note down potential stakeholders and name their interests! Can you distinguish between some general public and more officially formalized interests in Switzerland/Germany?</p> <p>What are MDCM-methods?</p>
<p><i>The forest visit in the afternoon is suggested and organized by our local support Prof. Marc Hanewinkel. This field trip is strongly linked with the topic of the course. However, the alternative would be to see the douglas-fir.</i></p>		
April 28		
<p>Aims: (1) Introduction to beech management and silvicultural options, compared to spruce. (2) Set up an emergency plan in case of large-scale storm damage.</p>		
<p>Beech management – typically German forestry</p> <ul style="list-style-type: none"> - traveling to the Black forest to visit beech stands and discuss silvicultural options with respect to different goals (e.g. economy, public interests) <p>After Lunch: Risk management</p> <ul style="list-style-type: none"> - visit of a municipal forest enterprise where half of the area was damaged by storm and discussing the options left 		<p>Task for students in advance: Note down three political or silvicultural strategies to adapt to risks in forest management!</p>
April 29		
<p>Aims: (1) Economic uses of beech. (2) Introduction to a special case of multiple-use forestry.</p>		
<ul style="list-style-type: none"> - following the chain from the forest to the product, we will visit a sawmill for hardwood that combines the production of lumber and wood pellets - production tables will be assessed regarding wood utilization <p>After Lunch: Single-tree selection forest</p> <ul style="list-style-type: none"> - back to the central Black forest to see the management by single-tree selection aimed at high valued timber (incl. presenting the economic data) 		<p>Dold Holzwerke GmbH Talstraße 9 D-79256 Buchenbach/Schwarzwald Tel 07661/3964-0 eMail info@dold-holzwerke.com http://www.dold-holz.de or http://www.dold-holzwerke.com</p>

April 30		
Traveling to Basel – Airport.		



Map of the Black forest, our excursion area